

# Synaptics Edge AI

---

## Rosenblatt Technology Summit: The Age of AI Scaling

August 2022



Satish Ganesan  
SVP & Chief Strategy Officer

# Hundreds of Millions of People are... EXPERIENCING SYNAPTICS



How you  
**TOUCH**

How you  
**SEE**

How you  
**CONNECT**

How you  
**PERCEIVE**

How you  
**ENGAGE**

How you  
**HEAR**

# PRODUCT LEADERSHIP FOR EVERY EXPERIENCE

HOW YOU  
**SENSE**



Human Interface

- Touch/Proximity Sensing
- Fingerprint Biometrics
- Voice Processing
- Display Drivers

HOW YOU  
**PERCEIVE & ENGAGE**



Edge AI

- Speech/Sound Event Detection
- Video Processing
- Open AI Tools
- Computer Vision

HOW YOU  
**CONNECT**



Connectivity

- Graphics & Compression
- Wi-Fi & Bluetooth
- Video Interfaces
- GPS

# INDUSTRY STATUS – GROWING ADOPTION

Edge AI is decentralized computing allowing data-driven decisions to be achieved at the point of maximum impact

IMPLEMENTATION  
EFFICIENCY REQUIRES:

## HOME / OFFICE



## AUTOMOTIVE



## FACTORIES



## HEALTHCARE



“ Global AI Edge Computing Market is expected to reach **~\$60 Billion** by 2033 ”

Allied Market Research

DEPLOYMENTS

CHALLENGES

HARDWARE

SOFTWARE

TOOLS

PARTNERS

# WHY AI AT THE EDGE?



## PRIVACY



User Identifiable  
Data Remains on  
Device



## LATENCY



Improved Responses  
/ Enhanced User  
Experience



## POWER EFFICIENCY



Reduces  
Unnecessary  
Cloud Traffic



## AVAILABILITY



Control & AI  
Independent of  
Internet Connection

Intelligently process data locally rather than in the cloud

# AI AT THE EDGE (COMPUTING)

Edge-AI Inference Compute Needs and Application Spectrum

LOW



**SPEECH AND SOUND  
EVENT DETECTION**

MID



**LOW RESOLUTION  
COMPUTER VISION**

HIGH



**HIGH RESOLUTION VISION  
AND VIDEO**

Edge-AI enables a diverse range of new applications

# AI AT THE EDGE (POWER)

Compute, memory, AI inferencing capability: More for less power

LOW



**SUB-MILLIWATT**

MID



**MILLIWATTS**

HIGH



**WATTS**

# LOW-COMPUTE, ULTRA-LOW-POWER EDGE AI



## Security & Monitoring

### SOUND EVENT DETECTION

Breaking Glass • Crying Baby • Firearms  
Footsteps • Falling Person

## Smart Voice

### COMMAND DETECTION

Always-On Voice (AOV) • Wake Word  
Hi Google / Alexa / Siri • TV Remote

### VOICE ACTIVITY

Calls for Help • Yelling • Screaming

## Smart Health

### SOUND & SENSING

Stress Indicators • Health Alerts  
Safety • Activity Detection • Vital Signs



# MID COMPUTE, STILL LOW POWER EDGE AI

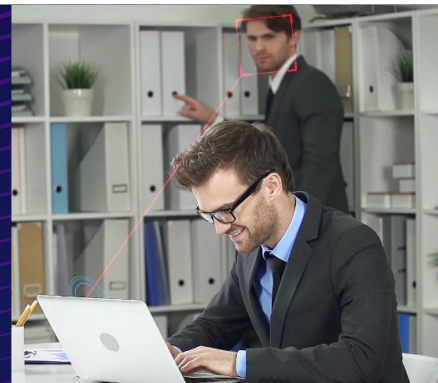


## SMART HOME / BUILDING

Fallen Person Detection • Minimum Activity Detection

## EVERYDAY EXPERIENCES

Auto Screen Lock • Display Dimming & On/Off Privacy  
Presence Detection • Location Tracking



## PERSON DETECTION

Tracking • Counting



## INDUSTRY 4.0

Predictive Maintenance • Safety  
Equipment Usage • Productivity  
Sensing • Process Optimization  
Meter Reading

# HIGH COMPUTE: A/C POWERED

## SMART MONITOR



### Interactive Displays

Home Video Conferencing • Smart Signage • Gender • Age • Context Awareness

## SECURITY CAMERA



### Image Quality Enhancement

Low Light Conditions • Motion Blur Removal • Rain/Fog Removal • Resolution Enhancement

### Perception

Person, Pet, Vehicle, Activity, Package Detection

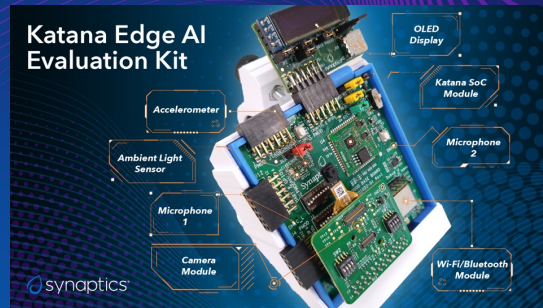
## VIDEO PROCESSING



### Television & Set-top Box

• Super Resolution • Content Analysis • Object Detection • User Personalization • Secure (DRM Ready)

# EDGE AI PORTFOLIO SPANNING LOW TO HIGH



## LOW

### Ultra-Low-Power Edge AI



Low-Power DSP



Audio / Voice AI Optimized



Neural Network Accelerator



Full AI Toolchain

## MID

### Low-Power Edge AI



Multi-Core AI Processor



Vision / Audio / Voice AI Optimized



Neural Network Accelerator



Full AI Toolchain

## HIGH

### Edge SoC



SyNAP AI framework (7 TOPS)



12MP dual camera ISP



HDMI in/out (4Kp60)

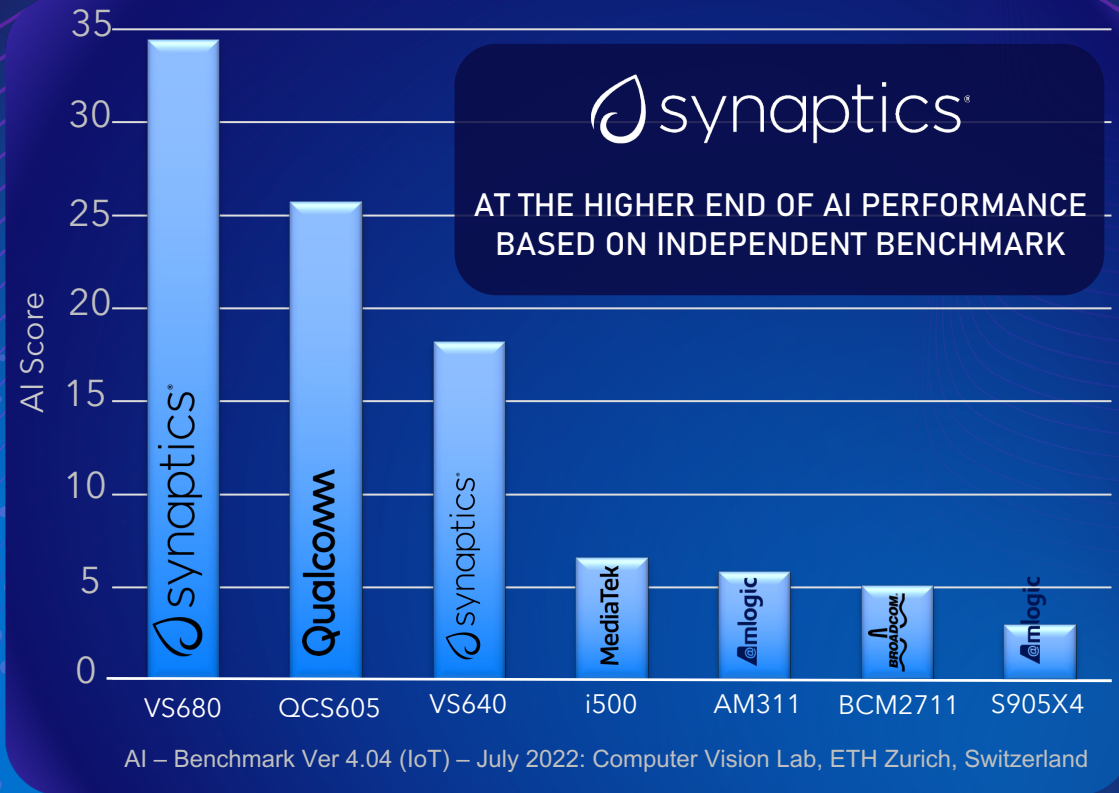


Android support



EDGE AI SOLUTIONS UNDERPINNED BY SYNAPTICS WIRELESS CONNECTIVITY

# HIGH COMPUTE NOW BEST-IN-CLASS



\*Tested: July 2022

# BEST IN CLASS WIRELESS CONNECTIVITY

Best in Connectivity | Performance | Power

## Wi-Fi



World's Best CMOS RF Technology



Multiple Generations of Combo Solutions



Industry Leading Performance

## Bluetooth



Proven IP Used By Mobile Industry



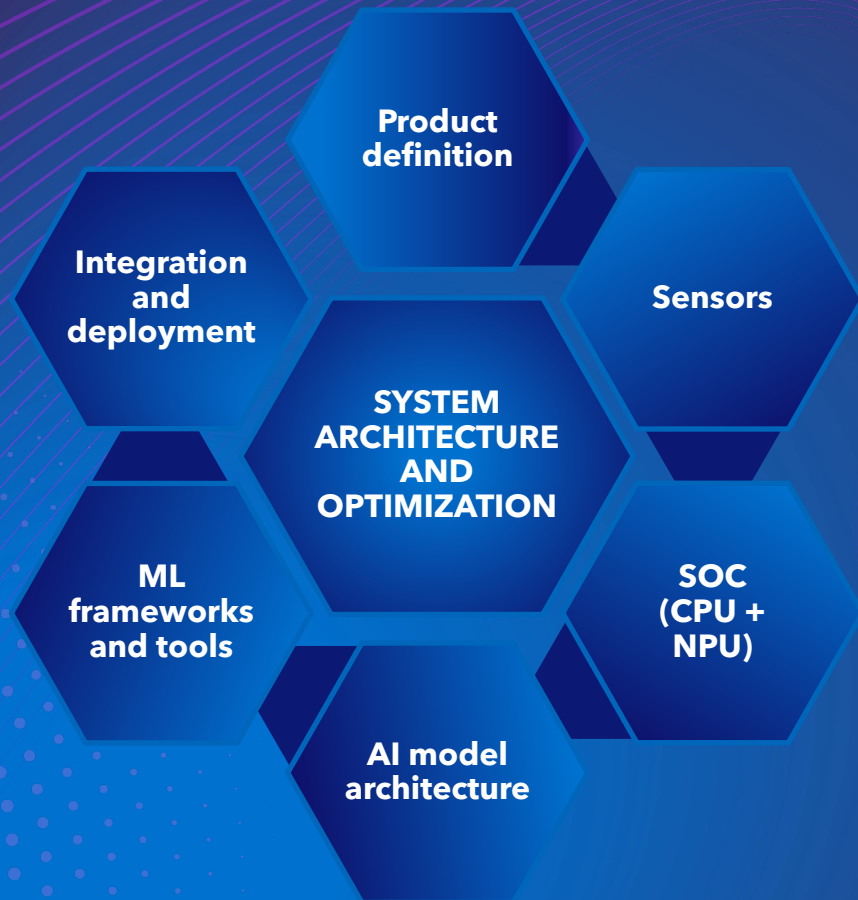
HADM (High Accuracy Distance Management)



Best-in-class WLAN/BT Coexistence

## GPS

# SYNAPTICS IS DEMYSIFYING EDGE AI DEVELOPMENT



Engaged with a diverse range of ecosystem partners to enable rapid application development and deployment



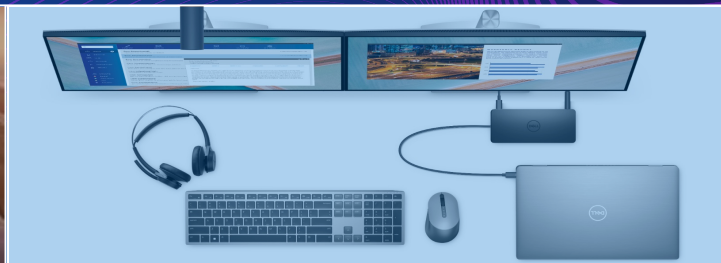
PILOT.AI

# INFUSING AI INTO SYNAPTICS CORE PRODUCTS



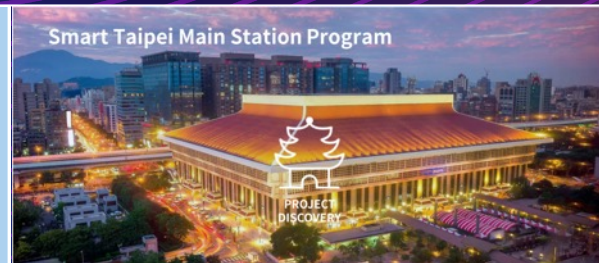
## SMART VOICE CONTROL

Keyword Detection



## UNIVERSAL DOCKING

Enterprise Productivity & Video Compression



Smart Taipei Main Station Program

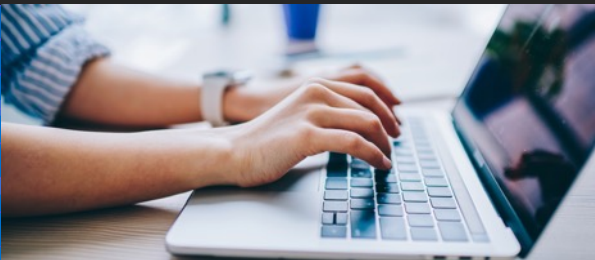
## MULTIMEDIA SoCs

Context Aware Advertising

## ENGINEERING EXCEPTIONAL EXPERIENCES

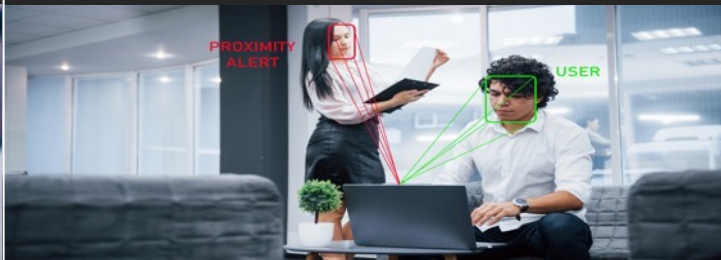
### TOUCHPADS

Accidental Contact (Palm rejection)



### VISUAL SENSING

Human Presence Detection



### FINGERPRINT

Matching Algorithm



# SUMMARY



AI Ecosystem Development



Algorithm & Training Expertise

SUCCESS IN AI REQUIRES:



Best-In-Class HW For Power & Performance



Best-In-Class Connectivity

Market Is Nascent & Evolving, Synaptics Is At The Forefront of Innovation in Edge AI



# Hundreds of Millions of People are... EXPERIENCING SYNAPTICS



How you  
**TOUCH**

What you  
**SEE**

How you  
**CONNECT**

What you  
**PERCEIVE**

How you  
**ENGAGE**

What you  
**HEAR**

A large, bold, dark blue 'Q&A' graphic centered on the page. The letters are thick and blocky. The background of the slide features a blue-to-purple gradient with a grid of glowing dots and a tunnel-like effect of curved lines.